

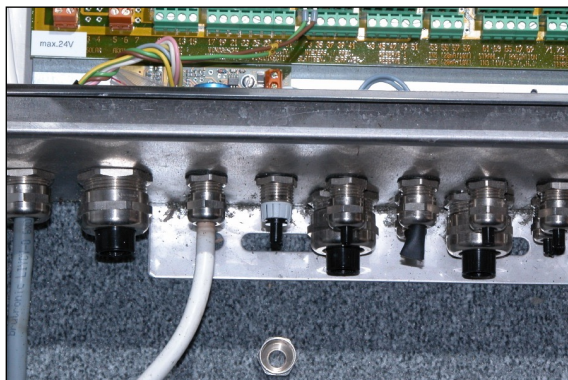
## Remote Terminal Unit T707 (Thies TDL14 firmware)

### Installation instructions for the Thies version

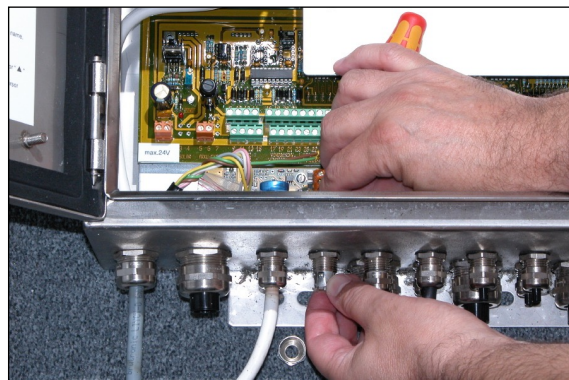
The following instructions are valid for the model running the T707-THI software, to be installed in conjunction with a Thies model TDL14 data logger.

### Attaching the connexion cable to the Thies data logger

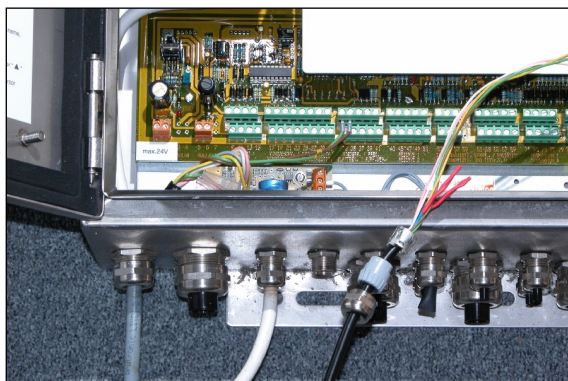
If you are performing the operations below while the Thies datalogger is powered, make sure the other end of the cable is NOT connected to the T707! Follow the steps shown in the pictures below:



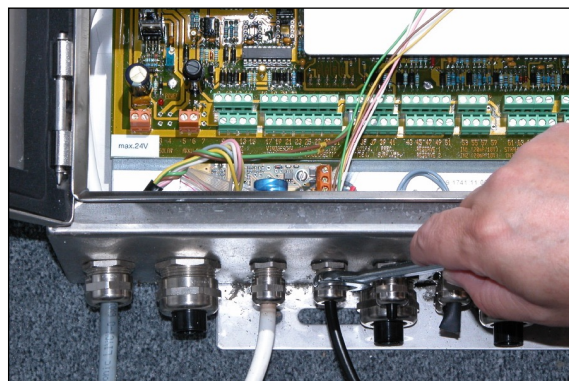
1. Remove the top of a free cable gland



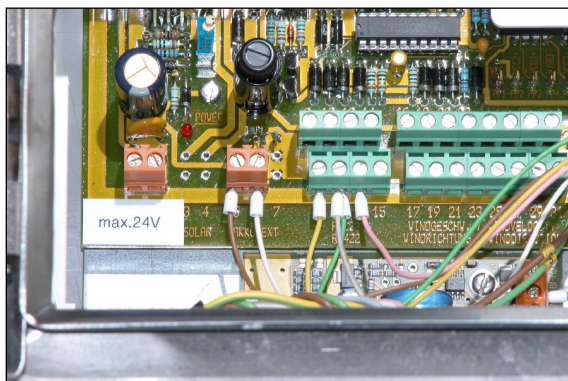
2. With a screwdriver, remove the metallic contact



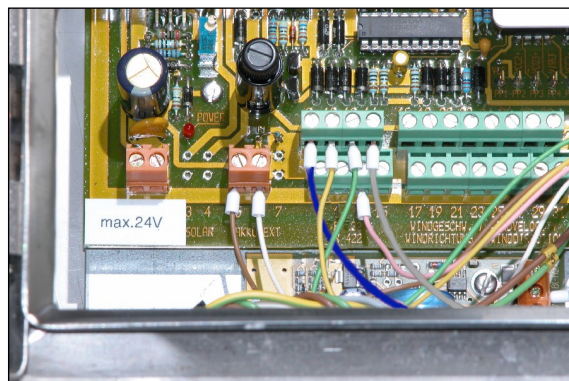
3. Mount gland parts on the cable as shown



4. Pull the cables and fasten the gland



5. Attach the wires as shown (RS-232 version)



6. Attach the wires as shown (RS-422 version)

After all the wires have been properly connected, you can now attach the other end of the cable to the T707 unit.

#### Notes:

- Before connecting the T707 cable wires to the screw posts, **make sure there are no other wires already connected!** You cannot drive the T707 in parallel with another device/modem.
- If the cable gland does not provide a ground connection, you should use a separate wire to connect the cable shield to the ground (i.e. to the white wire).
- The switch between RS232 and RS422 is done via software on the Metrilog Portal, or by issuing the commands **attr rs422 true** or **attr rs422 false** respectively over the service port (see below).

T707 Cable	Thies TDL14	
	RS232	RS422
Brown	5 (+12V)	5 (+12V)
White	6 (GND)	6 (GND)
Yellow	9 (RxD)	10 (RxD-)
Green	11 (TxD)	12 (TxD+)
Pink	13 GND	13 GND
Gray	11 (TxD)	14 (TxD-)
Blue	N.C. (insulated!)	8 (RxD+)

#### RS-232 Service connector

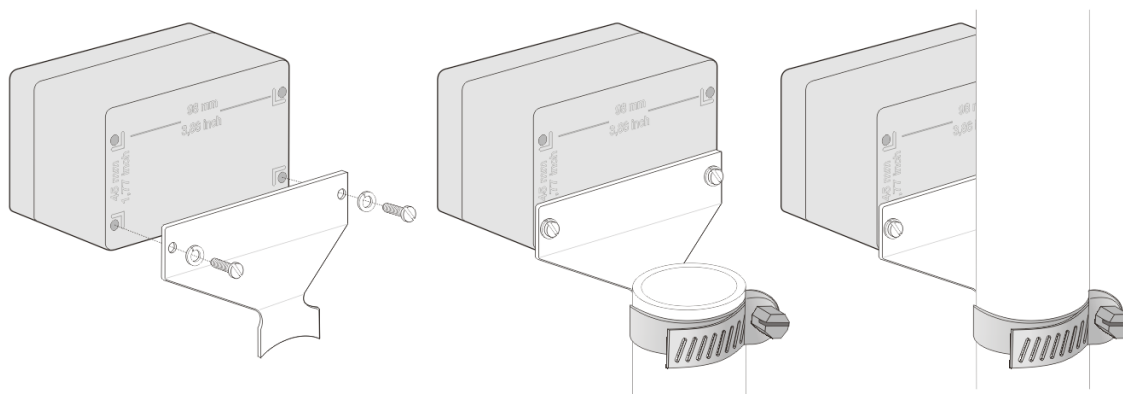
The RS-232 connector is used for maintenance and service. You should not have to deal with this connector unless indicated so by Metrilog support personnel.

Pin	Signal
1	DCD
2	RD
3	TD
4	DTR
5	GND
6	DSR
7	RTS
8	CTS
9	RI

#### Mounting the T707 unit

The T707 unit should be preferably mounted outdoors on a 4 cm diameter mast or support by means of the hose clamp supplied. In this case fasten first the optional metallic mounting fixture to the T707 enclosure using the two M6 screws and spacers included (see figure 1). If the unit is not installed outdoors, rather left on a table or a cabinet, you can ignore the metallic fixture.

It is recommended to place the **top of the unit (where the built-in antenna resides) not too close to metallic objects**, especially to the mast itself; ideally the unit should be mounted on the very top of the mast (see also figures 2 and 3). Use the supplied tie wraps to fasten the cables to the mast after the mechanical installation.



**Note for USA:** This device complies with part 15 of the FCC Rules. Operation is subject to the following two conditions: (1) This device may not cause harmful interference, and (2) this device must accept any interference received, including interference that may cause undesired operation.