

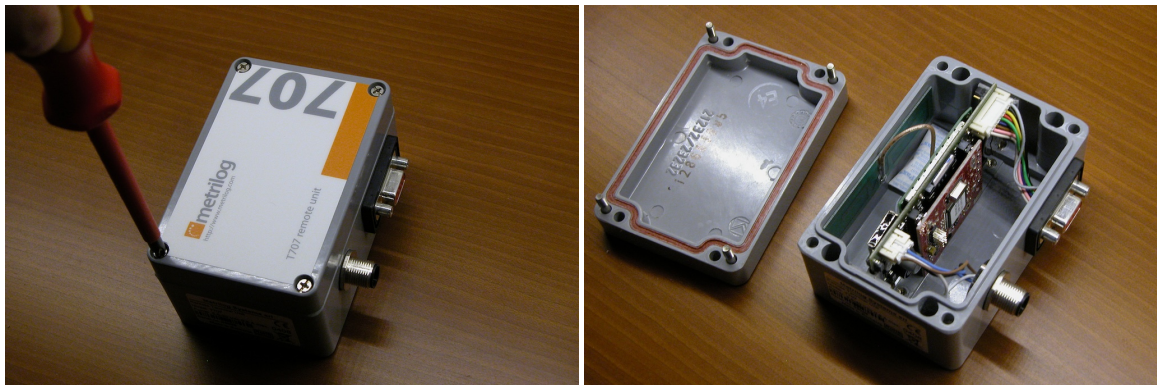
T707 RTU: SIM Card Exchange

This document describes the necessary steps to change a SIM card in the Metrilog T707.

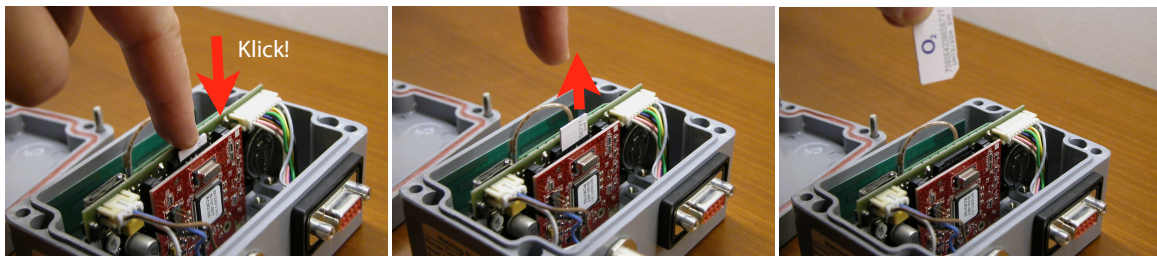
Preparation

Outdoors the procedure should only be executed at dry weather conditions, if this is not possible, the T707 unit should be demounted and brought into a dry environment. You will need a screw driver size PH2. Please absolutely write down the SIM card serial number before the exchange, you will need that number later on.

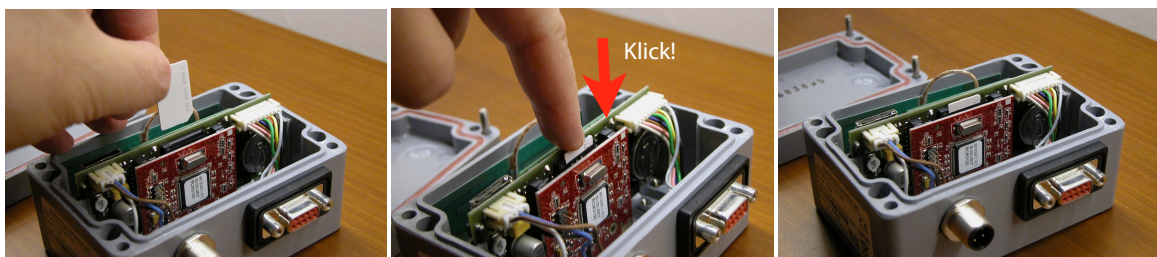
1. Remove the main connection cable, if attached, please also remove the cable on the service port. After this unscrew the 4 screws and open the housing (the screws should stick to the housing).



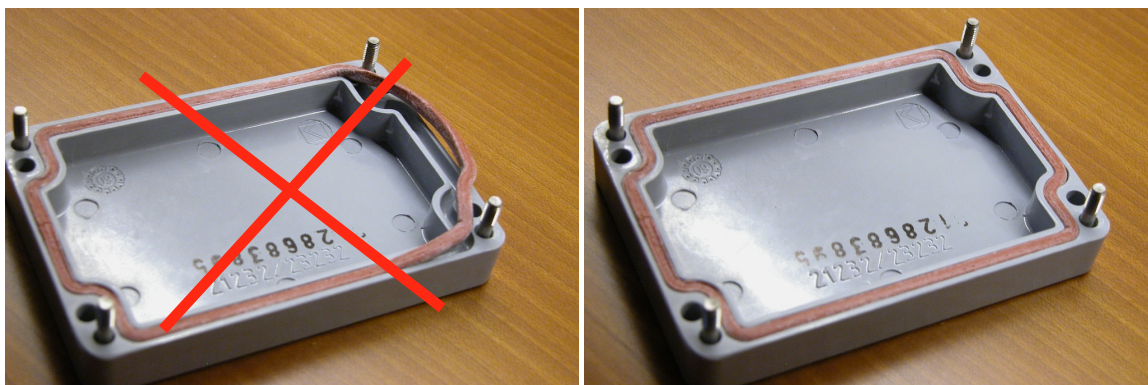
2. Identify the SIM card as shown on the photo. Slightly push the card down, until you can feel a “Klick”, that indicates the release the SIM. The card now sticks out a bit and can be removed.



3. Insert now the new card into the card holder, please make sure that the card is inserted with the correct side (see picture). When the card is latched you should feel the same “Klick” as when removing the other card, the new card now sits in the card holder.



4. Now remount the cover on the housing again. Please make sure that the seal stays in the intended guide trench of the cover and does not step out. Now screw the 4 screws with moderate power back to close the housing.



5. Attach the cables again to the T707 unit, please make sure that the round connector is turned to the right position and the thread is screwed correctly. The connector has a "nose" that has to be in the correct position on the jack, otherwise the pins may break.
6. Now send an SMS with the serial number of the unit (number on the sticker) and the serial number of the new SIM card inserted in the unit to (00) 43-699-12000-238. Alternatively you can also send an E-mail with the information to: support@metrilog.com. Metrilog needs the data to link the new card to the T707 unit and to set up the new configuration.



7. The exchange is now successfully conducted and the "old" SIM card, e.g. cut it through. Please note that the unit will operate properly only after the both numbers (new SIM Card serial number, serial number of the Metrilog T707 unit) have been forwarded to Metrilog!